

infuse™
My.
colour

CUSTOM BLEND



COLOUR SHAMPOO

NO MORE DULL HAIR COLOUR EVER

Concept

We recognize that there is no same hair colour created by your hair colorist.

Made For Me has been created by hairdressers for hairdressers.

This revolutionary concept of blending and creating tailor-made colour infusing shampoo and conditioners gives you the professional colorist a tool to preserve your client's tonal value from each salon appointment.



Made For Me a truly personalized experience for customers. Taking professional hair colour maintenance to new heights. Seriously shiny, luminous hair colour in a uniquely blended colour enhancing shampoo to take home.

Did you know :

Made for Me is an Eco-Friendly retail concept reusing prescription bottles, yes we encourage each and everyone to reuse and return Made For Me bottles which can be refilled up to 6 times.

And we guarantee :

Ethically sourced
Natural botanicals
100% Vegan
Cruely Free
No Silicone
No Paraben
No Sulphate
No Petrochemicals
No Mineral oil
No Palm Oil
No Ammonia





Made For Me

Made For Me is the next generation of personalized prescriptive professional retail service. Made for me a personal prescriptive in salon experience between colorist and client. Take hair colour and personalization to the next level by offering one of a kind salon service.

«Exceptional performance, quality ingredients and endless creativity for ultimate guest experience and integrity of the hair »

Founders of infuse My. colour™

Know How



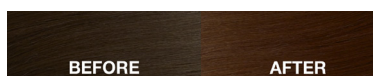
GOLD

Maintains brightness of pale gold, medium and dark blonde. Great on all highlights putting the sunshine back into washed out honey blondes and all warm colours to add shine and gloss.



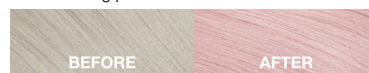
COPPER

Maintains brightness of deep strawberry blond copper, auburn and warm brown hair. Ad gorgeous warm tones try on bleached hair for peachy effect.



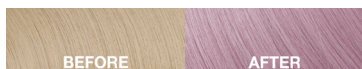
RUBY

Maintains brightness of red, red brown and burgundy hair, and also can be used on bleached blonde to create striking pinks.



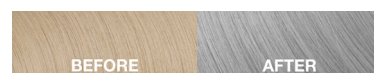
QUARTZ

Quartz is designed to give a soft dusty pink champagne tone to lightened/bleached hair or subtle misty filter to darker shades.



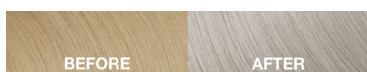
GRAPHITE

Graphite is a striking silver grey tone designed to create a steel like filter on lightened/bleached hair or to add pure graphite hue on any dark shades.



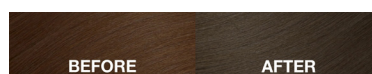
PLATINUM

Platinum neutralises yellow/gold in bleached hair. Maintains the brightness of grey and white hair. Great on highlights for a cool tone. Platinum delivers icy blond clean effects.



COBALT

Pure ash subdues warmth and maintains depth of dark ash blonde, light and medium to dark brown coloured hair. Cobalt is great for maintaining the coolness in hair. Applied to bleached blonde hair for a creative minty green denim.



Welcome to the infinite world of Made For Me prescriptive blends.

This chart provides you with an introduction to the fundamental colour knowledge creating an understanding for tonal qualities in infuse My. Colour and easily find the right colour from our palette to suit your guests hair colour signature formulation.

Infuse My. Colour shades all have cool undertones which makes even warm tones look luxuriously natural.

Gold - yellow with a hit on violet
Copper - orange violet
Ruby - Red violet
Cobalt - blue
Platinum - violet
Graphite - charcoal grey
Quartz - Dusty pink champagne



Unique 100% Vegan Silicone free colour infusing shampoo & conditioner delivers a super dose of pigment instantly whilst hydrating and reconstructing the hair fibres. Enriched with Hibiscus flower extract strengthening the hair and promoting a healthy scalp. Avocado oil smooths and reduces tangling. Infuse My Colour is available in 7 shades to create infinite bespoke formulas for each guest.



Formulating Made For Me

Step 1

Determine the tonal value of the hair colour ,
primary and secondary reflect of the colour

Step 2

Once you have established the tones, formulate
up to 200mls and always work to the lightest
colour in the hair if the hair is multi-tonal .
Made For Me professional blend bottle fills
200ml / DO NOT FILL TO THE TOP/
you need to have a gap in the top of the bottle for
inverting the blend and mixing.

Step 3

Dispense the blend into the bottle and invert the
mix to blend in front of the client

Step 4

Once the blend is mixed record the ratios of the
formula with the client colour record

Please have the client return the blend bottles on
the next colour visit or when they need refilling.
Bottles can be refilled numerous times before
having to dispose of the bottles for new ones.

Reuse. Reduce .Refill





infuse™
My.
colour

Made for Me
Professional custom blend

0% SULPHATES
PARABENS
SILICONE 100% VEGAN
SHAMPOO

200ml
175ml
150ml
125ml
100ml
75ml
50ml
25ml



Innovation

A close-up, artistic photograph of a woman's face, focusing on her eyes and hair. She has long, wavy hair dyed a vibrant pink. Her eye makeup is dramatic, featuring a mix of brown, blue, and pink shades. Her lips are painted a bright red. The lighting is soft, highlighting the texture of her hair and the intensity of her makeup.

A new concept in hair colour maintenance a retail offering to make each customer experience unique.

Following a simple desire to offer an intelligent unique retail offering which delivers a progressive, sustainable, professional result in the most personalized way

As hairdressers ourselves we know that our expertise and knowledge combined with technology and passion for creation results in a spectacular customer experience which is simply....
Made For Me ...

No More Dull Hair Colour Ever



MADE FOR METM
infuse
My.
colour
0% LIMITS 100% CREATIVITY



www.my-haircare.com
IG: @My.Haircareofficial
E; info@my-haircare.com