

color
graphics®
lift & tone

**BESPOKE
HIGHLIGHTS**

LIFT & TONE IN 1 STEP



MATRIX

MIXING & APPLICATION

For ultimate protection use Bond Ultim8 with your Colorgraphics Lift and Tone formula



POWDER LIFTER

2 SCOOPS



PICK A PROMOTER

2 SCOOPS

(8Vol for 1-4 levels of lift
22Vol for 3-6 levels of lift)



PICK A TONER

1 SCOOP

(Extra Cool, Cool, Neutral, or Warm)

1. Wearing an apron and suitable disposable gloves, mix the COLORGRAPHICS system in a non-metallic bowl.
2. Do not substitute any of the COLORGRAPHICS® Lift & Tone system components (Powder Lifter, Promoter, Toner) with other products. Matrix recommends using with VisiColor packs, or a Matrix-recommended foil*

3. Use only with the recommended Promoter 8 or 22 volume. Do not use with hydrogen peroxide greater than 22 volume.
4. Check frequently for desired level of lift.
5. Do not exceed the recommended development time (up to 50 minutes at room temperature).



BE COLOUR SAFE

REMEMBER YOU MUST DO AN ALLERGY ALERT TEST WITHOUT FAIL 48 HOURS BEFORE EACH USE OF A COLOURANT. READ AND FOLLOW THE INSTRUCTION LEAFLET.

OFF-SCALP APPLICATION ONLY



*only aluminium foil ref SOFT ALLOY 3079, 20 µm, or SOFT ALLOY 1200, 18 µm (according to Standard EN 573). One brand of foil that meets these standards is ProCare™.

Personalise With A Toner For A Beautifully Bespoke Finish

EXTRA COOL

- Softens orange tones
- For extra cool highlights



COOL

- Softens yellow tones
- For cool highlights



NEUTRAL

- Balances natural tones
- For natural sun-kissed looks



WARM

- Enhances red and copper tones
- For strawberry blonde looks



The Perfect Highlighting Services Your Client Will Want ...

1



BALAYAGE BLEND

Soft Illuminating Highlights

2



SOFT GLOW

Face Illuminating Highlights

3



FREEHAND SHIMMER

Dimensional Face Illuminating Highlights

4



HIDDEN GLOW

Interior Brightening Highlights

APPLICATION & TIMING



1. Prep

- Cleanse and towel-dry hair
- Spritz Total Results Pro-Solutionist Instacure Leave-In Treatment along lengths and ends to even out porosity



2. Apply

- Wear an apron and suitable disposable gloves
- Apply with a bowl and brush
- Avoid contact with the scalp
- Develop for up to 30 minutes



3. Rinse

- No need to shampoo!
- Rinse with warm water

4. Retail

- Biolage ColorLast Shampoo and Conditioner
- Total Results Color Obsessed Shampoo and Conditioner

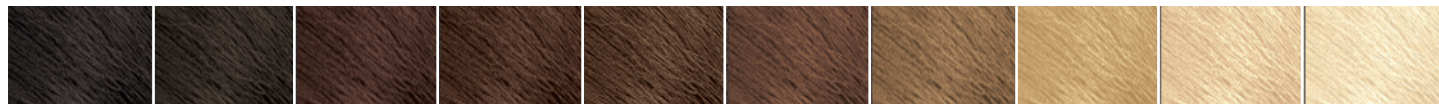


MATRIX

CLIENT CONSULTATION

NATURAL / TINTED COLOUR LEVEL

1/Blue Black	2/Black	3/Dark Brown	4/Medium Brown	5/Light Brown	6/Dark Blonde	7/Medium Blonde	8/Light Blonde	9/Very Light Blonde	10/Extra Light Blonde
-----------------	---------	-----------------	-------------------	------------------	------------------	--------------------	-------------------	---------------------------	-----------------------------



NATURAL UNDERLYING PIGMENT

Dark Red Brown	Red Brown	Dark Red	Red	Red Orange	Dark Orange	Orange	Deep Yellow	Yellow	Pale Yellow
-------------------	-----------	----------	-----	---------------	----------------	--------	----------------	--------	-------------



TO NEUTRALISE USE:

Blue Black Ash	Black Ash	Dark Ash Brown	Medium Ash Brown	Light Ash Brown	Dark Ash Blonde	Medium Ash Blonde	Light Ash Blonde	Very Light Ash Blonde	Extra Light Ash Blonde
-------------------	-----------	-------------------	---------------------	--------------------	--------------------	----------------------	---------------------	--------------------------	---------------------------



COLOUR WHEEL



WWW.MATRIXHAIRCARE.CO.UK

MATRIX