



TECHNICAL MANUAL

CONTENTS

Leyton House Skin Test & Strand Test	2
Hair Structure	3
Colour Classification	4
What is Silk Renewal Complex™ Technology	5
Why Choose Leyton House	6
Colour Wheel	7
Colour Star	8
Colour Chart Numbering System & 3 Step Consultation	9
Couture Silk™ Demi Permanent Colour	10
Couture Silk™ Permanent Colour	12
Grey Coverage	13
Application & Colour Balancing	14
Couture Silk™ Rouge	15
Couture Silk™ Illuminates & Dual Use Rouge	16
Alpine Blondes - 12 Series & 12.0S Booster, Covering Grey with Alpine Blonde	17
Lighteners	19
Toning	21
Colour Correction with Alpine Blonda	23
Colour Correction with Liqueurs, Velvets & Twilights	24
FillerPlex(EBR)	25
Extra Violet Purple .221	25
Colour Spangles - Direct Dye	26
Pure Curl	27

SKIN TEST & STRAND TEST

IMPORTANT: A skin sensitivity test is to be completed 48 hours prior to any chemical or colour service. Refer to [Leyton House Colour Safety Guidelines](#) on the Leyton House website.

1. Mix chosen Couture Silk Colour + chosen LH Developer (1:1.5/1:2)
 2. Apply the colour to dry skin test area behind the ear
 3. Leave the colour uncovered for 45 minutes
 4. Rinse and pat dry
 5. Review the skin in 48 hours and take note of any reaction during this period
 6. If an adverse reaction occurs during this time cease use and seek immediate medical advice
- If after 48 hours the Allergy Test remains negative, you can proceed to apply the colour

We recommend a STRAND TEST be performed prior to any chemical services

1. Take a small section of hair from the back of the head
2. Mix and apply chosen colour/lightener + LH Developer
3. Process as required (as per product)
4. Rinse, pat dry and review the hair

HAIR STRUCTURE

Hair above the skin consists almost entirely of keratin

A healthy cuticle consists of approximately 10 cuticle layers

The condition of the cuticle is essential for shine and healthy hair

The cortex is formed from fibres made of natural elements (carbon, oxygen, sulphur, hydrogen and nitrogen)

A porous hair structure will leave the cortex exposed and vulnerable to damage and dehydration

The medulla is not always present

CUTICLE

Outer Layer

CORTEX

Inner layer 60% of hair structure where most chemical changes occur

MEDULLA

Not always present



HAIR TEXTURE

Examining hair texture is a crucial part of the consultation. Differences in texture may cause unexpected colour results if not taken into consideration

FINE hair

Lacks volume

Easier to lighten and achieve grey coverage

Colour results can appear darker

MEDIUM hair

Good elasticity

Lightens well

Good grey coverage

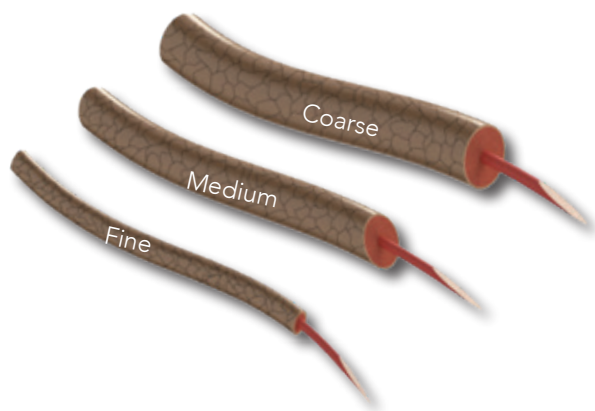
Colour results are usually true to level

COARSE hair

Reduced elasticity and very strong

Can be challenging to cover grey and lighten (dark levels)

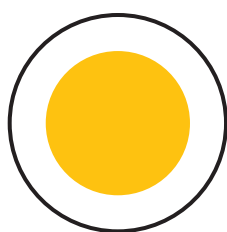
Colour results can appear lighter



REPAIR & RENEW

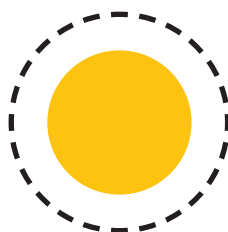
Porosity is the hair's ability to absorb and retain moisture. It is not uncommon for a head of hair to have varying degrees of porosity throughout the head. Hair that is highly porous or sensitised releases colour and moisture more quickly. Hair that is resistant is more difficult to penetrate and often requires a longer processing time. Porosity is caused by mechanical, environmental, and chemical factors.

RESISTANT



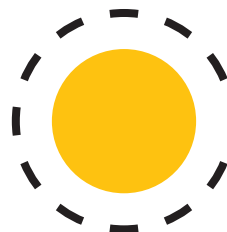
Tightly compacted cuticle

NORMAL



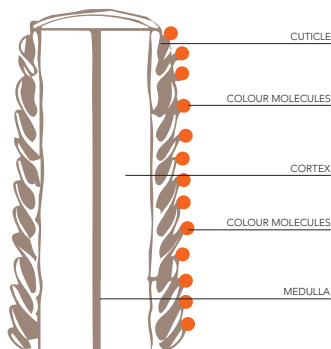
Cuticle is gently closed

SENSITISED



Cuticle is open, damaged and/or missing

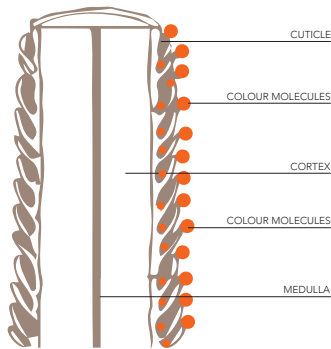
TEMPORARY COLOUR



Large non-oxidative colour molecules coating the cuticle
1-2 washes with the exception of pre-lightened and porous hair
Not mixed with a developer
Lodges between cuticle scales and coats the hair



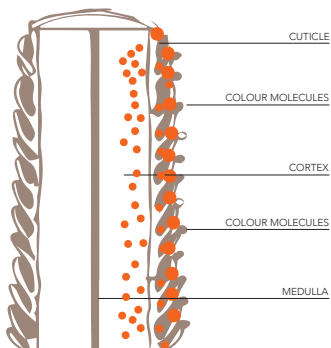
SEMI PERMANENT COLOUR



6 – 10 shampoos
Not mixed with a developer
Non-oxidative colour molecules anchor to the cuticle



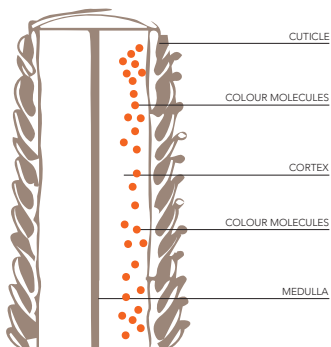
DEMI PERMANENT COLOUR



Non-oxidative colour molecules & oxidised molecules
Deposit only, no lifting action
Requires developer to oxidise pigments
Up to 25 washes
Gentle conditioning colour
70% - 100% grey coverage
Deposits colour under the cuticle



PERMANENT COLOUR



Lighten or darken natural hair
Requires developer to oxidise pigments
Covers up to 100% grey hair
Deposits colour in the cortex
Longer lasting colour results





Silk Renewal Complex™ - The Leyton House technology working to **SIMULTANEOUSLY LIFT AND DEPOSIT** colour. Thus effectively reducing the average processing time from 45 minutes to 30 minutes without heat or **ONLY** 15 minutes with a gentle heat.

This action allows the user to mix lower volumes of peroxide than most competitor brands and therefore maintaining the hair and scalp condition.

Couture Silk colour contains 99.5% refined high quality pigments.



SILK TECHNOLOGY

Silk amino acids and hydrolysed silk to hydrate and strengthen the hair

Pearl extract adds shine for an illuminating and radiant result

UV filter for added protection

RENEWAL COMPLEX

Synthetic bees wax for protection and hydration

Natural mineral oils, aloe vera, moisturisers and vegetable extracts for softness and elasticity

Green tea provides antioxidant properties to help fight against free radicals

Rice and milk proteins assist with repair

Cashmere protein (hydrolysed keratin) to strengthen and condition

WHY CHOOSE LEYTON HOUSE



- ▶ Silk Renewal Complex™ Technology
- ▶ Shorter Processing Time
- ▶ High Quality Pigments
- ▶ Built in UV Filter
- ▶ Low Ammonia & pH level
- ▶ Up to 100% Grey Coverage
- ▶ Creme/Gel Consistency
- ▶ Simultaneous Lift & Deposit
- ▶ 15 - 20 mins with gentle heat
- ▶ Increased deposit & uniform tone distribution
- ▶ Colour fade protection
- ▶ Gentle on hair
- ▶ Client satisfaction
- ▶ Easy application



- ▶ Ammonia Free
- ▶ Gentle Formulation with Treatment Qualities
- ▶ Contains Keratin for Strength
- ▶ 15 - 30 mins Processing
- ▶ Up to 100% Blended Grey Coverage
- ▶ Ideal for Colour Balancing
- ▶ Creme/Gel Consistency



Australian Owned & Formulated
Cruelty FREE
ICC numbering system

NOTES

.....

.....

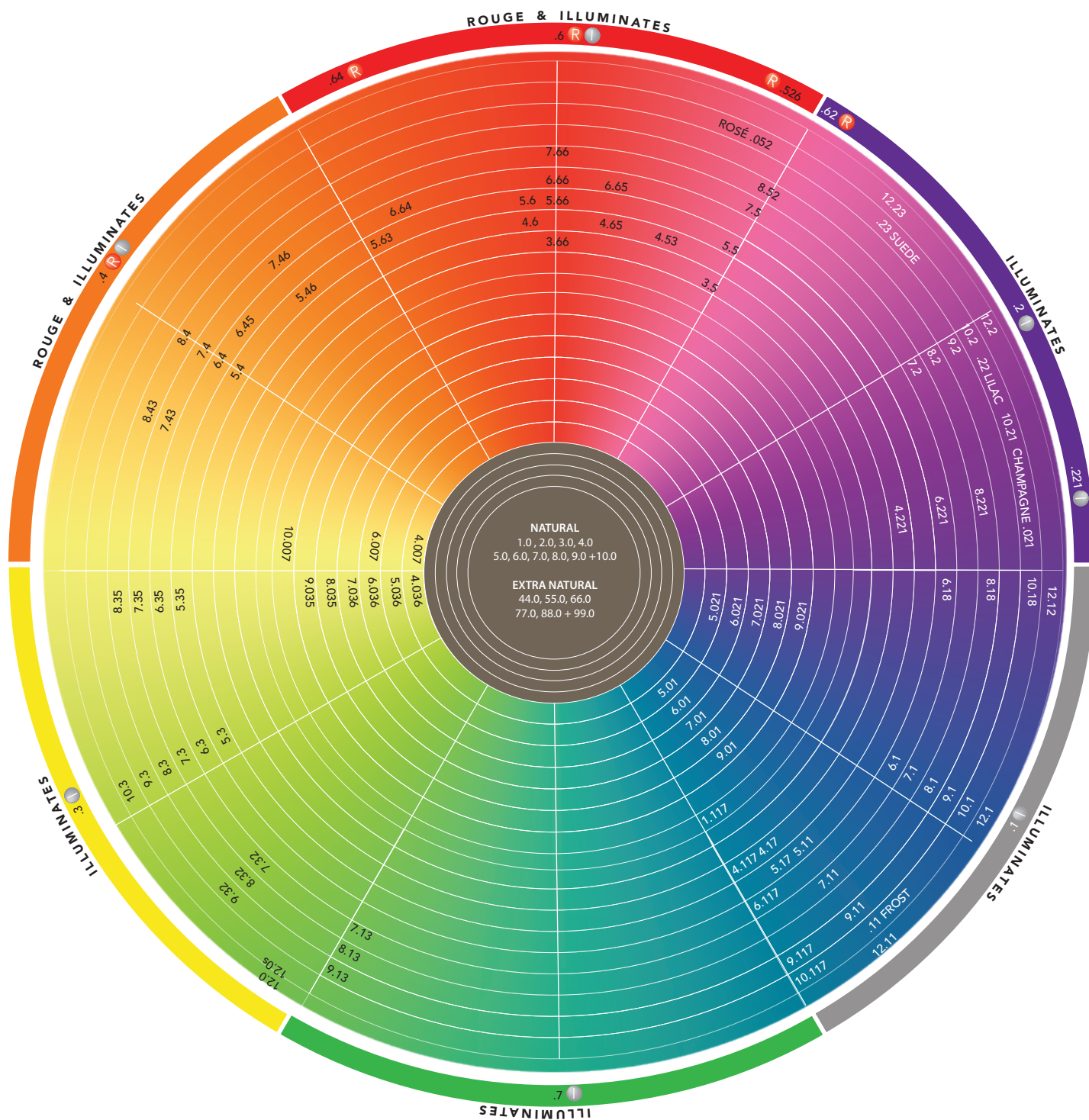
.....

.....

.....

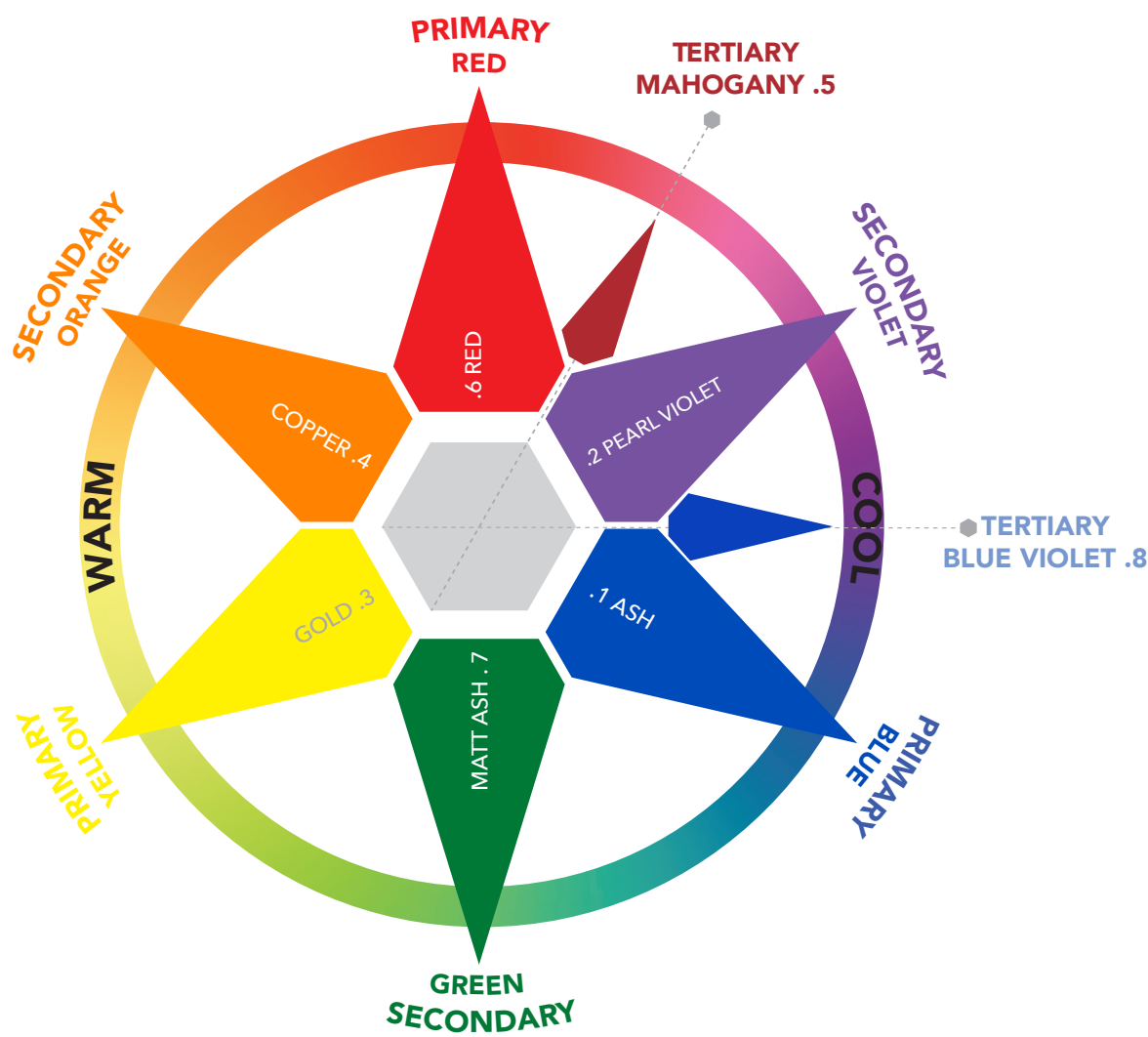
.....

COLOUR WHEEL



.1 = Ash	.5 = Mahogany
.2 = Pearl Violet	.6 = Red
.3 = Gold	.7 = Matt Ash
.4 = Copper	.8 = Blue Violet

COLOUR STAR & UNDERLYING PIGMENT



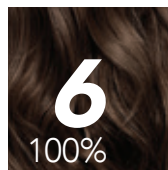
NATURAL DEPTH		UNDERLYING PIGMENT	NATURAL DEPTH		UNDERLYING PIGMENT
10.0	EXTRA LIGHT BLONDE	PALEST YELLOW	5.0	LIGHT BROWN	ORANGE/RED
9.0	VERY LIGHT BLONDE	PALE YELLOW	4.0	MEDIUM BROWN	RED/ORANGE
8.0	LIGHT BLONDE	YELLOW	3.0	DARK BROWN	RED
7.0	MEDIUM BLONDE	ORANGE/YELLOW	2.0	VERY DARK BROWN	RED
6.0	DARK BLONDE	ORANGE	1.0	BLACK	RED

COLOUR CHART & NUMBERING

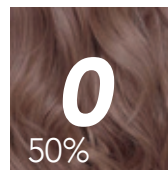
Couture Silk™ numbering system follows the International Colour Code (I.C.C) for easy identification. The first number represents the depth of colour - how light or dark the colour is.

The first number after the decimal point:-

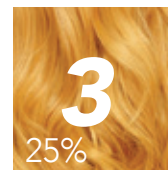
Primary tone = 50% of colour
 Secondary tone = 25% of colour
 Tertiary tone = 12.5% of colour



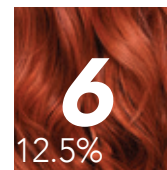
Depth



Primary
Reflect/Tone



Secondary
Reflect/Tone



Tertiary
Reflect/Tone

.0/N	.1/A	.2/V	.3/G	.4/C	.5/M	.6/R	.7/Gr	.8/BV
Natural	Ash	Pearl Violet	Gold	Copper	Mahogany	Red	Matt Ash Green	Blue Violet
								

3 STEP CONSULTATION

Step guide for colour selection, application and timing of your Couture Silk™ colour

3

1. WHAT DOES MY GUEST HAVE

- Natural depth (regrowth)
- Existing depth (mids & ends)
- % of grey hair
- Quality of hair

2. WHAT DOES MY GUEST WANT

- Stay the same depth
- Go lighter or darker
- Tone/Reflect (Natural, Cooler or Warmer)

3. WHAT DO I USE

- Product
- Developer
- Technique
- Timing



Couture Silk™ Demi Tone on Tone AMMONIA FREE
 Gentle formulation & treatment like qualities
 15 - 30 minutes processing time
 Up to 100% blended grey coverage
 Increased colour deposit with high quality pigments
 Keratin for strength

Standard Mixing Ratio 1:2
 2.8% LH Demi Permanent Activating Crème or
 1.5% LH Developer

MIXING & PROCESSING

HAIR TYPE	PROCESS WITHOUT HEAT No direct heat (cap only)
Normal/Standard	20 minutes
Coarse Hair/Grey Coverage	Up to 30 minutes
Porous/damaged hair – after chemical treatment or colour balancing	Up to 15 minutes
Toning	Visual up to 20 minutes

NOTE: When applied to dry hair a more saturated result will appear

E.G 30g/1.06oz Couture Silk™ Demi Permanent +
 60g/2.12oz 2.8% LH Demi Permanent Activating Crème (1:2) OR
 1.5% LH Developer (max deposit)

GREY COVERAGE

FASHION COLOURS	NATURAL COLOURS
Blends up to 70% grey	Blends up to 100% grey

When greater than 70% grey hair is present, add 25% natural colour to the colour mix

VIRGIN HEAD

1. Shampoo and towel dry hair
2. Apply from roots to ends
3. Process for full development time (20 minutes)



REGROWTH

1. Apply to root area
2. Process for full development time

*Note: To colour balancing spray mid-lengths and ends with Couture Care All Purpose 6 in 1. Massage through hair for the last 5-10 minutes

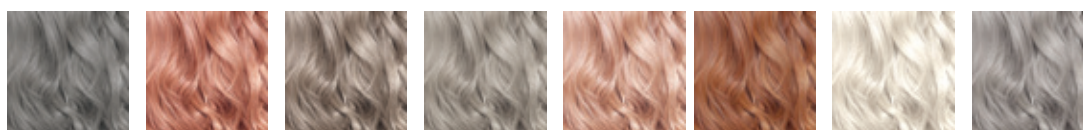


TONING OPTIONS

The perfect choice for toning pre-lightened hair using the depths 9 and 10

TONERS:

8.12, 9.046, 9.21, 10.01, 10.042, 10.21, 10.52, .000 CLEAR & .002 SILVER



1. Apply to damp towel dried hair
2. Standard Mixing Ratio 1:2 *See page 22 Advanced Toning Guide options
3. Use either 2.8% LH Demi Permanent Activating Crème OR 1.5% LH Developer
4. Process visually up to 20 minutes and rinse

COUTURE SILK™ .000 CLEAR

Does not contain pigment

Can be used as a gloss treatment

Dilute any Couture Silk™ Demi colour by up to 2 levels

% of .000 CLEAR	RATIO	RESULT
25%	3 parts colour + 1 part .000 Clear	1 level lighter
50%	2 parts colour + 2 part .000 Clear	2 levels lighter
75%	1 part colour + 3 part .000 Clear	Pastel toning

.002 SILVER

Add to any Couture Silk™ colour to neutralise or enhance the tone

.002 Silver - Maximum 10% added

EG 20g/0.71oz 9.32 + 2g/0.07oz .002 + 44g/1.55oz 2.8% LH Demi Permanent Activating Crème or 1.5% LH Developer



MIXING & PROCESSING

RATIO	DEVELOPER	PROCESSING TIME
1-10 SERIES		
1 + 1.5	3%, 6%, 9% or 12%	30 minutes no heat 15 - 20 mins with gentle heat
12 SERIES (see page 17)		
1 + 2 or 1 + 3	9% or 12%	35 - 55 minutes no heat 20 - 30 mins with gentle heat
TONING (see page 21)		
1 + 2	1.5% or 2% Colour Convert	Visual up to 20 mins NO HEAT

*See page 22 for Advanced Toning Guide

NOTE:
1 - 10 SERIES

For porous or damaged hair, process for up to 20 mins or up to 10 mins with gentle heat.

DEVELOPER SELECTION

1.5% (5 vol)	Tone on Tone colouring	Colour Balancing (porous hair)	Darkening	Toning (Max deposit)
2% Colour Convert	Tone on Tone colouring	Colour Balancing (porous hair)	Darkening	Toning (Max deposit)
3% (10 vol)	Tone on Tone colouring	Optimum Grey Coverage		Toning
6% (20 vol)	1 - 2 Levels of Lift	Fashion Colour Grey Coverage (resistant hair types)		Increased Tonal Intensity
9% (30 vol)	2 - 3 Levels of Lift	Alpine Blondes 3 - 4 Levels of Lift		
12% (40 vol)	3 - 4 Levels of Lift	Alpine Blondes 4 - 5 Levels of Lift		

For best results use scales for accuracy

NOTE: Artificial colour will not lighten artificial colour (except for Rouge)

GREY COVERAGE

Couture Silk Permanent (1-10 series) are formulated to cover up to 70% white hair without the need to add base.

% of GREY	COLOUR SELECTION	COLOUR	GREY COVERAGE
0% - 70%	Select + apply target colour	Fashion colour	100% multi-tonal coverage
		Natural	100% blended coverage
70% - 100%	3 parts target colour + 1 part Natural, Natural Ash or Extra Natural	Extra Natural	100% block coverage
		Illuminates	Not recommended / vibrant result
		Rouge	Not recommended / vibrant result
		Toners	Not recommended / pastel result

NATURAL GREY COVERAGE 4 WAYS

Use 3% LH Developer unless hair is resistant. See Extra Coverage on Resistant Grey Hair Options

NATURALS SERIES (1.0 - 10.0)

Naturals (.0) gives 100% blended grey coverage



EXTRA NATURALS SERIES (44.0 - 99.0)

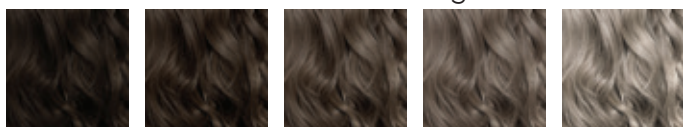
Extra Naturals contain extra pigment – ideal for coarse hair

Extra Naturals create 100% block coverage resulting in a natural depth



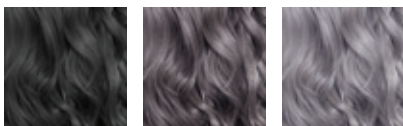
NATURAL ASH SERIES (5.01 - 9.01)

Cooler results. Natural ash gives 100% blended coverage or will enhance cooler



ASH BLUE VIOLET SERIES (6.18 - 10.18)

Cool grey coverage or intense cool results add 25% - 75% to naturals, extra naturals or natural ash series. 100% block coverage add to extra naturals



EXTRA COVERAGE ON RESISTANT GREY HAIR OPTIONS

1. Extend processing time up to 10 minutes (no heat)
2. Resistant mix 1:1 may reduce tone
3. 6% LH Developer for resistant hair (1:1)
4. Pre-pigment/Pre-soften (1 part colour (1 level lighter) + 1 part water)

NOTE: When colouring a high percentage of grey with a cool reflect colour, i.e. .1, .2, .11, .21, .18 & .221 etc, ensure the addition of 25% - 50% Natural or Extra Natural is used in the mix to avoid over tone and guarantee coverage

VIRGIN HEAD - SAME DEPTH OR LIGHTEN 1 LEVEL

1. Apply to mid-lengths and ends starting at the darkest area
Leave 2cm at the root area
2. Process for half the development time
3. Apply fresh colour to root area and process for full development time



VIRGIN HEAD – LIGHTENING 2 OR MORE LEVELS

1. Apply to mid-lengths and ends starting at the darkest area
Leave 2cm at the root area
2. Process for half the development time
3. Apply fresh colour with a lower developer strength to root area and process for full development time



DARKENING

1. Apply from roots to ends
2. Process for full development time



REGROWTH

1. Apply to root area
2. Process for full development time



COLOUR BALANCING

LOSS OF SHINE

1. Spray Couture Care All Purpose 6 in 1 to mid-lengths and ends
2. Apply Couture Silk™ Demi .000 Clear + 1.5% LH Developer or LH Demi Permanent Activating Creme (1:2)
3. Process for 5-10 minutes

LOSS OF REFLECT

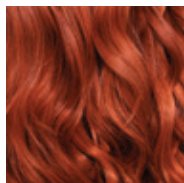
1. Process regrowth colour for half the development time
 2. Spray Couture Care All Purpose 6 in 1 to mid-lengths and ends
 3. Massage and comb through and apply colour *regrowth colour to ends
 4. Process for up to 10 minutes
- * Only when colour on regrowth is target shade for ends

LOSS OF REFLECT AND DEPTH

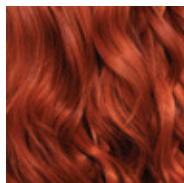
1. Spray Couture Care All Purpose 6 in 1 to mid-lengths and ends
2. Apply corresponding Couture Silk™ colour
3. Process visually for up to 20 minutes



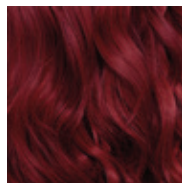
Designed for dark natural depths 6 & below (Except Magenta which is a level 6 & above)
 High performing lift and deposit colour
 Use alone or blend with permanent colours to intensify
 Create fresh vibrant fashion hues
 Off scalp application
 Unique built in lift negates the use of high developer strengths maintaining hair condition



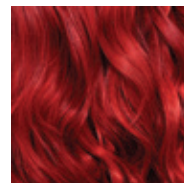
.4
Copper



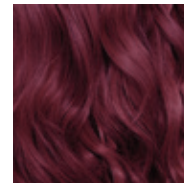
.64
Red Copper



.62
Red Violet



.6
Red



.526
Magenta

RATIO	MIX COLOUR & DEVELOPER	PROCESS
-------	------------------------	---------

1 + 1	20g/0.7oz Rouge + 20g/0.7oz LH Developer	30-35 mins No Heat 15 mins Gentle Heat
-------	---	---

NOTE:

12% Developer may result in a lighter, less reflective colour
 Magenta will not lift artificial colour

LEVELS OF LIFT	LH DEVELOPER
----------------	--------------

4 - 5	12%
3 - 4	9%
2 - 3	6%
1 - 2	3%

COLOUR BALANCING

Colour balancing porous hair with Couture Silk™ Rouge:
 Mix 1 part Couture Silk™ Rouge + 1 part water, process for 30 minutes.

NOTE:

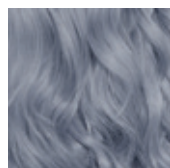
The best underlying pigment for creating a vibrant red result is depth 5 (red/orange), except for Rouge .526 Magenta, which is best used on depths 6 and above. Please consider when selecting developer.

Cultural colour: for lighter and brighter results on depths 1 - 3 or dark coloured hair, mix 25-50% 12.0s with your Couture Silk™ Rouge.

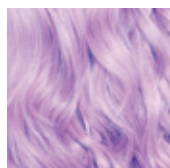
Can be used on coloured hair, the amount of vibrancy in end result will depend on buildup of colour within the hair.



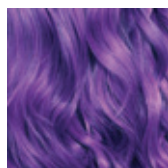
Intensify, neutralise or customise colours using Couture Silk Illuminates
5 pure pigments and 2 dual use Rouge



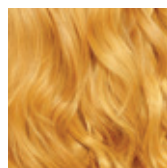
.1 Ash



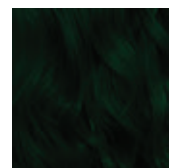
.2 Pearl
Violet



.221 Extra Violet
Purple



.3 Gold



.7 Matt
Ash (Green)

NOTE:

Add more Couture Silk™ Rouge to the mix to customise or intensify colour

Add 10% - 50% to your Couture Silk™ Permanent or Demi colour

Mix 1 part total colour + 1.5 parts LH Developer

E.g 20g/0.7oz Couture Silk™ Permanent + 2g/0.07oz .221 + 33g/1.2g LH Developer = 10% mix

DUAL USE

Dual use Couture Silk™ Rouge/Couture Silk™ Illuminates .4 and .6

Add more Couture Silk™ Rouge to your mix to customise colour

E.G

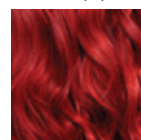
Add 10% to 50% to your desired Couture Silk™ Permanent or Demi colour

Mix 1 part total colour + 1.5 parts LH Developer

E.G 20g/0.7oz Couture Silk™ Permanent + 2g/0.07oz .221 + 33g/1.2oz LH Developer = 10% mix



.4 Copper



.6 Red

COUTURE SILK™ ILLUMINATES/ROUGE	COUTURE SILK™ PERMANENT USAGE	COUTURE SILK™ DEMI USAGE
.1 Ash	10 - 50%	10 - 50%
.2 Pearl Violet	10 - 50%	10 - 50%
.221 Extra Violet Purple	10 - 50%	10 - 50%
.3 Gold	10 - 50%	10 - 50%
.4 Rouge - Copper (Dual)	Up to 25% (maximum)	Up to 10% (maximum)
.6 Rouge - Red (Dual)	Up to 25% (maximum)	Up to 10% (maximum)
.7 Matt Ash (Green)	10 - 50%	10 - 50%

ALPINE BLONDES HIGH LIFT - 12 SERIES

Alpine Blondes with built-in tone. Ability to lift up to 5 levels
On scalp blanding designed to lighten and neutralise



12.0s Booster and 12.0 when high % of grey present
Contains 3 times more toning capability than level 10 colour

MIXING & PROCESSING

NATURAL DEPTH 6 to 8	DEVELOPER (1:2)	PROCESSING TIME
20g/0.7oz Alpine Blonde	40g/1.4oz + 9% or 12% (Up to 4 levels of Lift)	35 - 55 minutes no heat 20 - 30 mins with gentle heat
NATURAL DEPTH 4 to 5	DEVELOPER (1:3)	PROCESSING TIME
20g/0.7oz Alpine Blonde	60g/2.1oz + 9% or 12% (Up to 5 levels of Lift)	35 - 55 minutes no heat 20 - 30 mins with gentle heat

ALPINE BLONDE 12.0S BOOSTER

USE 12.0s to boost a level for extra lift with no interference to reflect
Add 25% = 1 extra level of lift or 50% = 2 extra levels of lift

NOTE:

1. Ensure sufficient product is applied in fine sections
2. Lift and deposit achieved will depend on the hairs' texture and porosity
3. Mix 1:2 for maximum toning plus lift
4. Mix 1:3 for maximum lift (levels 5 and below)
5. 3% or 6% LH Developer may be used for maximum toning and less lift
* Visual processing after 30 mins
6. When choosing the correct colour, consider underlying pigment, natural depth, eye colour and skin tone
7. Illuminates may be added into mix by 10% for increased tonal value
8. High lift results generally will be a natural blonde to warm blonde result

LEVEL	ALPINE BLONDE	LH DEVELOPER	RATIO	RESULT
8	12.1, 12.12 or 12.2	9% or 12%	1 + 2	10 Depth natural cool blonde
7	12.1 or 12.12	9% or 12%	1 + 2	10 Depth natural blonde
6	12.1 or 12.11	9% or 12%	1 + 2	9-10 Depth natural blonde
5	12.11	12%	1 + 2 or 1 + 3	9-10 Depth warm blonde
4	12.11	12%	1 + 3	8-9 Depth warm blonde

ALPINE BLONDE APPLICATION

VIRGIN HEAD

1. Apply to mid-lengths and ends starting at darkest areas
Leave 2cm at the root area
2. Process for half the development time
3. Apply fresh colour to root area and process for 35 - 55 minutes
*Note: Gentle heat may be used (20 - 30 minutes)



REGROWTH

1. Apply to root area only
2. Process for 35 - 55 minutes
*Note: Gentle heat may be used (20 - 30 minutes)



COVERING GREY WITH ALPINE BLONDE

% of GREY	MIX
Up to 50%	Use desired Alpine Blonde
50 - 70%	¼ 12.0 + ¾ desired Alpine Blonde
70 - 100%	Use Couture Silk™ Permanent

E.G
Natural depth 7 / 50% Grey

10g/.4oz 12.0 + 30g/1.05oz 12.1
+
80g/2.8oz 9% LH Developer

MIXING RATIO
1:2

COLOUR REMOVAL

1. After processing, add a small quantity of water and emulsify colour (particularly around the hairline)
2. Rinse until the water runs clear
3. Shampoo and condition with Couture Care Hydrolock or Rhassoul Moisturising Colour Care



ALPINE BLONDA 7

Fast action Kaolin formula lifts up to 7 levels, this high performance powder lightener is dust free and suitable for off scalp applications only

Non-flaking formula fragrant lavender powder
Suitable for use with all LH Developers
Contains Kaolin and Guar Bean



ALPINE BLONDA 9

Superior high lifting up to 9 levels with clean results on all depths/levels
Contains Condensed Sugar Protection, soothing the persulphates

Highly recommended for strong, resistant/coarse and dark hair types
Contains Guar Bean and Kaolin composite to strengthen and repair

ALPINE BLONDA 7 & 9	DEVELOPER	APPLICATION	PROCESS
Mix 1:2 (1 part Alpine Blonda + 2 parts LH Developer)	3%, 6%, 9% & 12%	Apply to dry hair only *Do not apply to pre-shampooed hair	10 - 50 mins Visually check frequently

*12% LH Developer is recommended on Levels 1 - 3 only

DO NOT MIX 1:1
OFF SCALP
DO NOT USE HEAT

FOR BEST RESULTS

1. Always follow manufacturers instructions for mixing and processing
2. Use non metallic bowl
3. Mix by FOLDING Alpine Blonda 7 or 9 and LH Developer - Do Not Beat
4. Take fine sections, starting at darkest area and apply plenty of product
5. Do not overlap
6. Do not add heat
8. If in doubt as to the hair quality or if a metallic build up is present - Perform a Strand Test
9. Refer to Underlying Pigment page 8



SINGLE STEP LIFT AND TONE

Ideal for on scalp application and lightening techniques, including foils, highlights, balayage or freehand.

Up to 7 levels of lift

- Argan oil for the prevention of moisture loss
- Acai oil & Chamomile for antioxidant protection
- Built-in tone
- Dedicated 4.5% and 7.5% Alpine Developers

ALWAYS PERFORM A SKIN SENSITIVITY TEST

1. Mix 1 Part of Alpine Blonding Crème + 1 or 2 part Alpine Developer Crème, use the same volume of developer as you will use on the client
2. Apply to dry skin behind the ear. Leave uncovered for 50 minutes
3. If any irritation, stinging, swelling, burning or redness should occur, wash immediately and do NOT use the product; consult a Medical Practitioner or Dermatologist
4. Rinse well and pat dry
5. Review the skin in 48 hours before applying the product. This test represents a reasonable precaution but an allergic reaction may still occur

On Scalp	1:1 up to 1:2 + 4.5% LH Alpine Developer Crème	Visual up to 50 mins
Freehand	1:1.5 up to 1:2 + 4.5% or 7.5% LH Alpine Developer Crème	Visual up to 50 mins
Foiling	1:2 + 4.5% or 7.5% LH Alpine Developer Crème	Visual up to 50 mins

** The above ratios are a guide only * Heat is not recommended*

REMOVAL

Once ideal level of lift is achieved:




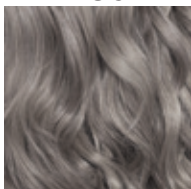
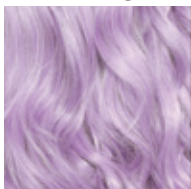
1. Rinse thoroughly lightly with luke warm water
2. Gently shampoo and condition
3. Tone if desired, using either Couture Silk Permanent or Couture Silk Demi Permanent

NOTE:

1. Ratios may vary from 1:1 up to 1:2 depending on a. Texture b. Porosity c. Existing damage
2. Fine or damaged hair: Mix 1:2 ratio (same level of lift is achieved but at a more gentle and steady speed so as not to damage/break hair)
3. On scalp lightening ONLY use 4.5% LH Alpine Developer Crème

TONING

Impart shine, condition, and tone on pre-lightened hair.

COUTURE SILK™ PERMANENT TONER	SUITABILITY	* GENERAL MIX COLOUR & LH DEVELOPER	PROCESS
<p>CHAMPAGNE</p> 	<p>Pre-lightened to levels 9 & 10 Softly counteracts yellow using beige ash tone to create a clean champagne</p>	<p>1 + 2 (2% Colour Convert or 1.5% LH Developer)</p>	<p>Visual up to 20 mins</p>
<p>ROSÈ</p> 	<p>Pre-lightened to levels 9 & 10 Creates a soft rose result with added depth</p>	<p>1 + 2 (2% Colour Convert or 1.5% LH Developer)</p>	<p>Visual up to 20 mins</p>
<p>SUEDE</p> 	<p>Pre-lightened to levels 9 & 10 Soft, natural, warm tone with added depth</p>	<p>1 + 2 (2% Colour Convert or 1.5% LH Developer)</p>	<p>Visual up to 20 mins</p>
<p>FROST</p> 	<p>Pre-lightened to levels 9 & 10 Counteracts unwanted yellow/ orange tones. Ice effect</p>	<p>1 + 2 (2% Colour Convert or 1.5% LH Developer)</p>	<p>Visual up to 20 mins</p>
<p>LILAC</p> 	<p>Pre-lightened to levels 9 & 10 Counteracts unwanted yellow tones. Lilac effect</p>	<p>1 + 2 (2% Colour Convert or 1.5% LH Developer)</p>	<p>Visual up to 20 mins</p>
<p>LEVELS 9 & 10</p>	<p>Pre-lightened to levels 9 & 10 Counteracts unwanted yellow, (.2) yellow/orange & orange tones (.01, .1, .11, .117, .18) add beige (.32)</p>	<p>1 + 2 (2% Colour Convert or 1.5% LH Developer)</p>	<p>Visual up to 20 mins</p>

*See page 22 Advanced Toning Guide

NATURAL LEVELS 7 - 10

Permanent Toners

1. Mix 1:1 with 1.5% for fine textured hair
Maximum of 10 minutes on damp towel dried hair
Apply mid-lengths to ends, then to scalp and watch closely
2. Mix 1:1.5 for medium to coarse texture
Maximum of 15 minutes on damp towel dried hair
Apply where most needed first, then globally

BREAKING THE BASE

1. Mix 1:1.5 or 1:2 with 1.5%
2. Follow same directions as above

DEMI TONER

1. Mix 1:2 with Demi Permanent Activating Creme
2. Fine hair mix 1:1.5
3. For natural levels 8 and above apply to mid-lengths and work towards scalp

Use .000 Clear mixed with Demi Permanent Activating Creme to slow colour deposit and gain more control.

.000 Clear should be mixed in 25% increments of formula until desired outcome is achieved

NATURAL LEVELS 1-6

Permanent Toners

1. Mix 1:1.5 with 1.5% to tone without breaking the base and ultimate deposit of tone
2. Mix 1:2 for darker shades to achieve maximum tonal strength
3. Color Convert may be mixed in a 1:2 ratio with any colour to tone to desired result without breaking the base

PLATINUM AND GREY RESULTS

Hair must be lifted to Level 10 or above and toned to a clean blonde

1. Mix 1:1.5 with 1.5% LH Developer with your choice of Frost, Lilac, Champagne, 10.117, 10.18, and any mix of the colours mentioned to achieve desired result without over toning.
These shades may process quickly and should be watched closely
Always apply to damp towel dried hair
2. Demi Toners
Mixed 1:2 with desired colour, 10.01, .002, and .000, and any combination of these colours
3. Color Convert
Mixed 1:2 with 10.117, or 10.18 to desired outcome
Always apply to damp towel dried hair

OPTION 1: GENTLE CLEANSE REMOVAL (TONE ONLY)

1. Mix 1 part LH Alpine Blonda 7 + 1 part 3% LH Developer + 1 part water/shampoo
2. Apply to darkest areas first
3. Visually process

OPTION 2: MAXIMUM REMOVAL (DEPTH AND TONE)

1. Mix 1 part LH Alpine Blonda 7 + 2 parts chosen LH Developer
2. Apply to darkest areas first
3. Visually process

GOING DARKER/COLOURING BACK

When going 2 or more shades darker a FILLER is required to replace the pigment that was removed when hair was lightened.

Filler and target colours can be selected from either Couture Silk™ Permanent or Couture Silk™ Demi Permanent depending on the hair's texture and porosity.

COUTURE SILK™ PERMANENT COLOUR	TARGET DEPTH	COUTURE SILK™ DEMI PERMANENT COLOUR	POROUS HAIR TYPES
	10		2 parts 10.0 + 1 part 10.3 + Colour Convert (1:2)
1 part 10.3 + 1 part water	9	1 part 8.3 + 1 part .000 Clear + 2 parts water	Equal parts 10.0 + 10.3 + Colour Convert (1:2)
1 part 9.3 + 1 part water	8	2 parts 8.3 + 1 part .000 Clear + 3 parts water	2 parts 10.3 + 1 part 10.2 + Colour Convert (1:2)
1 part 8.3 + 1 part water	7	1 part 8.3 + 1 part water	3 parts 9.3 + 1 part 8.43 + Colour Convert (1:2)
1 part 7.43 + 1 part water	6	2 parts 7.4 + 1 part 7.3 + 3 parts water	1 part 8.43 + 1 part 8.3 + Colour Convert (1:2)
1 part 6.4 + 1 part water	5	1 part 6.4 + 1 part water	1 part 7.4 + 1 part 7.46 + Colour Convert (1:2)
1 part 5.4 + 1 part water	4	1 part 5.4 + 1 part water	6.4 + Colour Convert (1:2)
1 part 4.6 + 1 part water	3	1 part 5.4 + 1 part water	
1 part 3.66 + 1 part water	2	1 part 3.66 + 1 part water	Equal parts 5.4 + 5.5 + Colour Convert (1:2)
1 part 3.66 + 1 part water	1	1 part 3.66 + 1 part water	

METHOD

1. Evenly spray Couture Care All Purpose 6 in 1
2. *Apply filler to lightened areas + blow dry into hair
3. Mix and apply target colour
4. Process for full development time

*Starting at the nape and working up to the head,
if regrowth is visible DO NOT apply to that area

NOTE:

1. Fragile blonde hair may benefit from by
Couture Silk™ Demi Permanent colour
2. Ensure sufficient product is applied for an
even result

COLOUR CORRECTION LIQUEUR & VELVETS

A unique range of permanent colours that contain built in FILLER.
Highly suitable for low lighting, colouring back in a single step

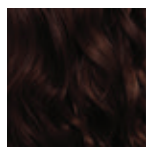
Create natural Liqueur or cooler Velvet colours on pre-lightened hair or as a full colour

LIQUEUR COLLECTION

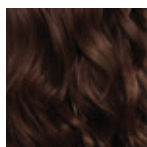
4.036, 5.036, 6.036, 7.036, 8.035 & 9.035

VELVET COLLECTION

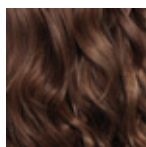
5.021, 6.021, 7.021, 8.021 & 9.021



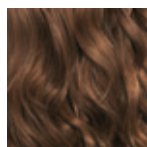
4.036



5.036



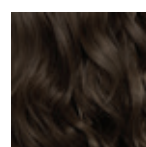
6.036



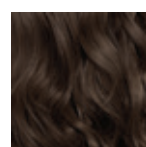
7.036



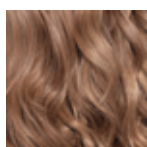
5.021



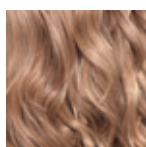
6.021



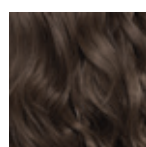
7.021



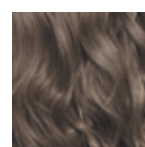
8.035



9.035



8.021



9.021

MIX

DEVELOPER

PROCESS

Mix 1:1.5
(1 part Liqueur/Velvet +
1.5 parts LH Developer)

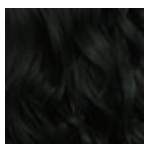
Natural Hair - 3% LH Developer
Porous Hair - 1.5% LH Developer

30 No Heat or
15 mins Gentle Heat

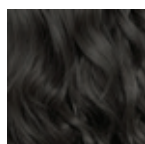
NOTE: Porous hair may require extra warmth/filler to ensure target result is achieved.

COUTURE SILK™ TWILIGHTS (.117) DEPOSIT ONLY

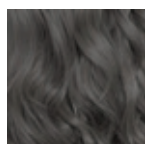
An innovative collection of permanent blue matt ash colours designed to create cool / silver reflects



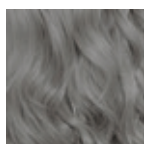
1.117



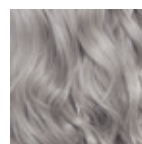
4.117



6.117



9.117



10.117

MIXING RATIOS - 1.5% LH Developer 1:2 // 2% Convert 1:2 // 3% LH Developer 1:1.5

1. Use on pre-lightened and toned hair (levels 9 & 10)
2. Can be used on natural white (grey) hair
3. When applied to golden hues, the double blue ash reflect (.11) will result in a green ash tone.
To prevent this occurring, neutralise unwanted warmth, then apply target Twilight colour
4. Add to naturals for cool results when depositing only
5. Neutralise unwanted warmth (levels 8 and below)

NOTE: Not designed for lightening/lifting) *See page 22 for Advanced Toning Guide



Single step Enzymatic Bond Reconstructor (EBR) with dual process action. Plex treatment working from the OUTSIDE to INSIDE, surrounding the hair fibres with a protective webbing structure to mend broken bonds during a chemical service. Penetrates and reconstructs the bond fibres, providing elasticity and strength, even after just ONE application.

Permanent Colour Service 1:10

1gr/.03oz FillerPlex(EBR) + 10gr/.3oz colour

Example

6gr/.2oz FillerPlex(EBR) + 60gr/2oz Couture Silk colour

Alpine Blonda 7 & 9 Service 2:10

2gr/.07oz FillerPlex(EBR) + 10gr/.34oz lightener

Example

8gr/.27oz FillerPlex(EBR) + 40gr/1.4oz Alpine Blonda

NOTE:

Average powder mixture 25g + 50g of LH Developer.

Filler Plex is measured to weight of lightener only.

E.G

25g Alpine Blonda + 5g FillerPlex + 50g LH Developer

CARE SERVICE

For added Strength & Resilience - in-between colour services. Mix 10mls FillerPlex(EBR) + 100mls water. Mix thoroughly (easier to mix and shake in the bottle)

1. Apply to dry hair section by section
2. Comb through ensuring perfect distribution of product
3. Process for 5 mins – DO NOT RINSE
4. Apply Rhassoul Hair Recovery Masque and leave in for 10 mins
5. Rinse thoroughly and shampoo with Rhassoul Colour Care Shampoo (no need to condition)

FILLERPLEX(EBR) & CURLY HAIR

Fills the porosity of the hair structure making it less porous, absorbs less water and less reactive to humidity. For frizz reduction - The more often its used = Less Frizz.

NOTE: Accurate measuring is key for correct usage of this product. Always measure the quantity being dispensed into the mix using Leyton House digital scales.

COUTURE SILK™ EXTRA VIOLET PURPLE (.221)



Fashion Violets are made from 2 primary colours; red and blue

Blue - The largest molecule and sits closest to the cuticle and subsequently washes out more easily

Red - The second largest and sits deeper in the cortex and is not as easy to remove.

If the cuticle/hair is damaged or has varies in porosity, results will may be uneven or may appear not to have taken. Violets can be used for lightening however, underlying pigments can neutralise the violet resulting in a dull tone.

OPTIONS FOR LONGEVITY AND EXTRA VIBRANCY

1. Pre-pigment with a level lighter than target colour - E.G TARGET 6.221 - Pre-pigment 15g/.53oz 8.221 + 15g/.53oz water (dry in). Apply 6.221 + 1.5% or 2% LH Developer
2. Add up to 10% .6 Red Rouge, to create a warm based extra violet reflect
3. Lock in colour with Couture Care All Purpose 6 in 1
4. Home maintenance violet shampoo - MIX: Colour Spangles Sour Grape (Purple) + Couture Care Hydrolock shampoo. Add Colour Spangles Blue Berry (Blue) or Cherry Berry (Red) depending on choice and SHAKE WELL
5. Use 1.5% or 2% Colour Convert (1:2 mix ratio) rather than 3% (1:1.5 mix ratio) when depositing

7 Ammonia Free, Peroxide Free, Semi Permanent DIRECT DYES
INTERMIXABLE colours to create an endless palette of rainbow hues
Conditions hair while colouring with Babassu Oil



For pastel effects, add Vintage Pastel * Colour Spangles can last up to 10 washes

INSTRUCTIONS:

1. Pre-lighten hair to depth 10 with your chosen LH Alpine Lightener
2. Rinse and shampoo THOROUGHLY after lightening or toning
3. Dry hair - Do not use a conditioner or treatment
4. Completely saturate hair with your chosen Colour Spangles. Massage thoroughly into hair
6. Process up to 30 minutes (gentle heat may assist)
7. Rinse with cool water and apply Couture Care All Purpose 6 in 1 Treatment Spray

AFTERCARE:

1. Do not wash hair for at least 2 days after application
2. Wash hair with a PROFESSIONAL Sulphate, Silicone and Paraben Free shampoo and conditioner - Couture Care collection is ideal
3. To refresh colour - we recommend adding Colour Spangles to your Couture Care Shampoo
4. Exposure to chlorine may effect colour longevity

PASTELISING:

1. Pre-lighten hair to depth 10 with your chosen LH Alpine Lightener
2. Rinse and shampoo THOROUGHLY after lightening or toning
3. Dry hair - Do not use a conditioner or treatment
4. Mix desired quantity of Colour Spangles + Vintage Pastel in a bowl PRIOR to application (1:10) - The lighter the mix the less longevity
4. Completely saturate and massage colour thoroughly into hair
6. Process up to 30 minutes (gentle heat may assist)
7. Rinse with cool water and apply Couture Care All Purpose 6 in 1 Treatment Spray

PRE TONE OPTION

Mix equal parts
Couture Silk™ ½ Champagne +
½ Lilac + 1-1.5 1.5% OR
3% LH Developer
Process visually

EXPERT TIPS:

- * The more porous the hair the MORE INTENSE the colour
- * For maximum longevity, even coverage and vibrancy, a CLEAN level 10 MUST be achieved
- * Tickled Pink and Sour Grape can be applied twice for increased intensity and may require pre-toning
- * Silver Kisses - To prevent depth when using on over porous hair an initial test strand should be performed and/or add Vintage Pastel to the mix
- * Silver Kisses Best Results - Mix equal parts Silver Kisses + Vintage Pastel (1:1)
- * Colour Spangles will NOT give grey coverage on natural hair types

PERM SYSTEM ENRICHED WITH KERATIN
FOR ALL HAIR TYPES WITH 3 SIMPLE PRODUCTS



NATURAL HAIR

STEP 1

- Gently shampoo and towel dry hair
- Wind hair onto curling rods and apply PURE CURL WAVING LOTION
- Process 15 -25 mins (visually check results at 15 mins and every 2 - 5 mins thereafter) - Processing cap is suggested for non-treated hair types. Cap and heat (max 40°) is recommended on thick/coarse hair/ resistant hair. NOTE: Regularly check the process
- Rinse thoroughly for 5 mins with warm water and towel dry

STEP 2

- Evenly apply PURE CURL FUSION
- Process for 2 mins
- Towel dry hair

STEP 3

- Apply PURE CURL NEUTRALISER
- Process for 5 mins
- Towel dry then hair remove curling rods

STEP 4

- Reapply PURE CURL NEUTRALISER
- Process 5 mins
- Rinse well with warm water
- Finish by applying COUTURE CARE All Purpose 6 in 1
- Blow dry and style

TREATED HAIR

STEP 1

- Gently shampoo and towel dry hair
- Wind hair onto curling rods
- Add 20ml/.67oz of PURE CURL FUSION to PURE CURL WAVING LOTION, shake well and apply
- Process 8 - 15 mins (visually check results at 8 mins and every 2 mins thereafter) – NO HEAT
- Rinse thoroughly for 5 mins with warm water and towel dry

STEP 2

- Evenly apply PURE CURL FUSION
- Process for 2 mins
- Towel dry hair

STEP 3

- Apply PURE CURL NEUTRALISER
- Process for 5 mins
- Towel dry hair then remove curling rods

STEP 4

- Reapply PURE CURL NEUTRALISER
- Process 5 mins
- Rinse well with warm water
- Finish by applying COUTURE CARE All Purpose 6 in 1
- Blow dry and style

LEYTON *Lyf* HOUSE
PROFESSIONAL



LEYTON HOUSE PROFESSIONAL
AUSTRALIA USA UK
E: sales@leytonhouseprofessional.com
www.leytonhouseprofessional.com