

## ADVANCED TONING GUIDE

### NATURAL LEVELS 7 - 10

Permanent Toners

1. Mix 1:1 with 1.5% for fine textured hair

Maximum of 10 minutes on damp towel dried hair

Apply mid-lengths to ends, then to scalp and watch closely

2. Mix 1:1.5 for medium to coarse texture

Maximum of 15 minutes on damp towel dried hair

Apply where most needed first, then globally

### BREAKING THE BASE

1. Mix 1:1.5 or 1:2 with 1.5%

2. Follow same directions as above

### DEMI TONER

1. Mix 1:2 with Demi Permanent Activating Creme

2. Fine hair mix 1:1.5

3. For natural levels 8 and above apply to mid-lengths and work towards scalp

Use .000 Clear mixed with Demi Permanent Activating Creme to slow colour deposit and gain more control.

.000 Clear should be mixed in 25% increments of formula until desired outcome is achieved

### NATURAL LEVELS 1-6

Permanent Toners

1. Mix 1:1.5 with 1.5% to tone without breaking the base and ultimate deposit of tone

2. Mix 1:2 for darker shades to achieve maximum tonal strength

3. Color Convert may be mixed in a 1:2 ratio with any colour to tone to desired result without breaking base

### PLATINUM AND GREY RESULTS

Hair must be lifted to Level 10 or above and toned to a clean blonde

1. Mix 1:1.5 with 1.5% LH Developer with your choice of Frost, Lilac, Champagne, 10.117, 10.18, and any mix of the colours mentioned to achieve desired result without over toning.

These shades may process quickly and should be watched closely

Always applied to damp towel dried hair

2. Demi Toners

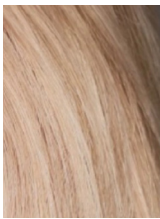
Mixed 1:2 with desired colour, 10.01, .002, and .000, and any combination of these shades

3. Color Convert

Mixed 1:2 with 10.117, or 10.18 to desired outcome

Always apply to damp towel dried hair

## TONING EXAMPLES ON LEVELS 9 & 10



### BEIGE:

#### *Permanent Toners*

Couture Silk Champagne + 1.5% (5vol) 1:1.5

Couture Silk Champagne + Lilac + 1.5% (5vol) 1:1.5

### BEIGE:

#### *Permanent Colour*

2 parts Couture Silk 9.32 + 1 part 10.2 + 1.5% (5vol) 1:1.5

1 part Couture Silk 9.2, 1 part 9.1 + 1.5% (5vol) 1:1.5

Base Break: Couture Silk 9.2 + 3% (10vol) 1:2



### NEUTRAL:

#### *Permanent Toners*

1 part Couture Silk Champagne + 1 part Frost + 1.5% (5vol) 1:1.5

2 parts Couture Silk Lilac + 1 part Frost + 1.5% (5vol) 1:1.5

### NEUTRAL:

#### *Permanent Colour*

1 part Couture Silk 9.021 + 1 part 9.1 + 1.5% (5vol) 1:1.5

2 parts Couture Silk 9.2 + 1 part 10.18 + 1.5% (5vol) 1:1.5



### ICE:

#### *Permanent Toners*

Couture Silk Frost + 1.5% (5vol) 1:1.5

2 parts Couture Silk Frost + 1 part Lilac + 1.5% (5vol) 1:1.5

### ICE:

#### *Permanent Colour*

2 parts Couture Silk 9.11 + 1 part 12.0s + 1.5% (5vol) 1:1.5

#### *Demi Permanent Colour*

2 parts Couture Silk Demi Permanent .000 + 1 part .002 + 1.5% (5vol) 1:2