

BLONDA

ADVANCED BOND PROTECTION

LIGHTENING HAIR THE CORRECT WAY
PROTECT & LIGHTEN SIMULTANEOUSLY
WITH ADVANCED BOND PROTECTION

BLONDA WITH
ADVANCE BOND PROTECTION



3 KEY POINTS OF EXCELLENCE

CONDITIONING EXCELLENCE:

Ensuring the **protection of the hair's structural bonds** throughout the lightening process is fundamental to achieving a successful outcome.

Advanced Bond Protection goes beyond retaining moisture; it revolutionises the impact of lightening, fostering the overall health and resilience of the hair. The result is a stronger structure, improved texture, and a radiant, conditioned appearance.

PERFORMANCE EXCELLENCE:

Consistently produces exceptional lifting results, whilst neutralising and eliminating yellow/brassy tones through pigmented powder.

Blonda provides versatile application methods, ensuring consistent and dependable outcomes in achieving immaculate levels of lift.

PROFESSIONAL EXCELLENCE:

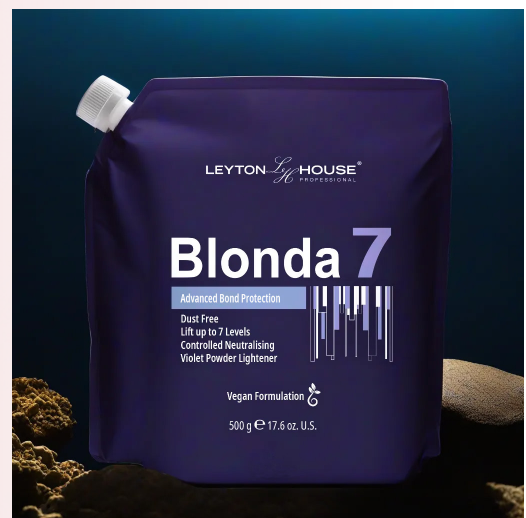
In collaboration with the hairdresser, Leyton House ensures a harmonious partnership, delivering consistently reliable and proven outcomes.

KEY INGREDIENTS

- Clay** • Gentle on hair, moisturising properties, assists in irritation reduction
- Pectin** • Nutritional to hair health, hydrating and anti-inflammatory properties
- Erythorbic Acid** • Assists in collagen production, UV protection, scalp health, and contains antioxidants

BLONDA 7

- Advanced Bond Protection
- Up to 7 levels of lift
- Gentle controlled lifting
- Clay, Pectin and Erythorbic Acid
- Dust free high performance
- Violet pigment powder
- Use with all LH & Alpine Developers



GENERAL MIX (1:2)

(1 part Blonda + 2 parts LH Developer or Alpine Developer)

DEVELOPER	APPLICATION
3%, 6%, 9% & 12%, 4.5% & 7.5%	Apply to dry hair only
Alpine Developer	*Do not apply to pre-shampooed hair

PROCESS

10 - 50 mins (max)
Frequently Check Visually

*12% (40vol) LH Developer use on Levels 1 - 3 only



ULTRA LIGHT BLONDE

VERY LIGHT BLONDE

LIGHT BLONDE

MEDIUM BLONDE

DARK BLONDE

LIGHT BROWN

MEDIUM BROWN

DARK BROWN

VERY DARK BROWN

BLACK