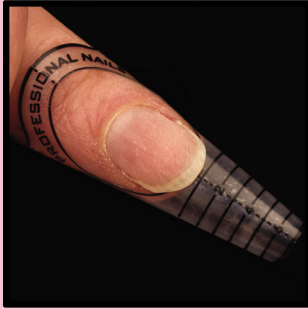


# SCULPTURED ACRYLIC FRENCH



**1.** Prepare and prime nail, attach form.



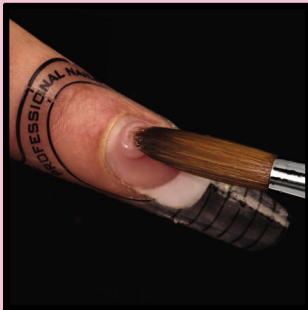
**2.** Apply Ultra White Acrylic to zone 1 to create smile line.



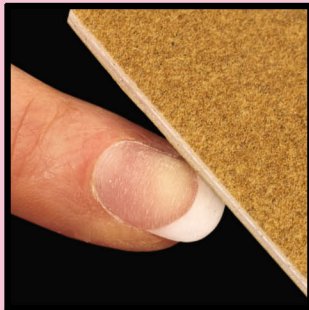
**3.** Apply pink/clear acrylic to zone 2.



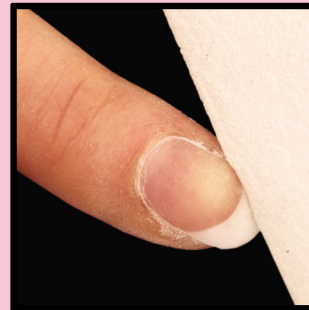
**4.** Apply pink/clear acrylic to build apex of the nail.



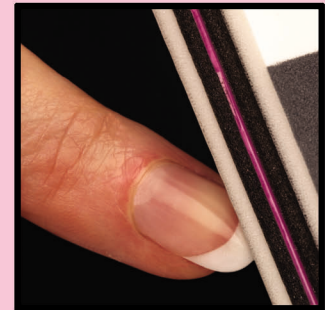
**5.** Apply clear/pink acrylic to zone 3 ensuring product does not come in to contact with surrounding tissue.



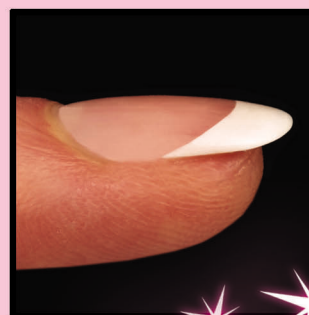
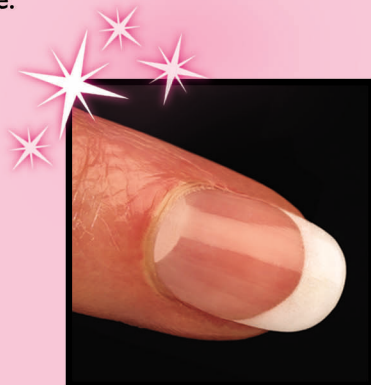
**6.** File and shape the nail.



**7.** Smooth, shape and refine surface to remove any scratches.



**8.** Buff to high shine, apply nail oil.



## Finished Nail

[www.edgenails.co.uk](http://www.edgenails.co.uk)

**Tel: 01256 840840**